

PREMIER PENTHOUSE OFFICE SPACE FOR LEASE

141 LAURIER AVENUE WEST
SUITE 1100 AND PENTHOUSE



JENNINGS
REAL ESTATE
BROKERAGE INC.

PROPERTY HIGHLIGHTS

- Steps from City Hall, Courthouse and Parliament Hill, in close proximity to a variety of amenities and public transit
- Completely renovated lobby, new washrooms, elevator cabs, and modernized common areas
- Brand new 24-person shared boardroom available to tenants free of charge
- Complimentary shower and fitness facilities on-site
- The Ministry of Coffee, with a breakfast and lunch offering, located directly off the lobby
- Easily accessible location with underground parking, surface parking and secure bike storage
- Property manager's office located in the building



141 LAURIER AVENUE WEST SUITE 1100 AND PENTHOUSE

Coffee Shop



Shared Boardroom



Shower Facility



Gym



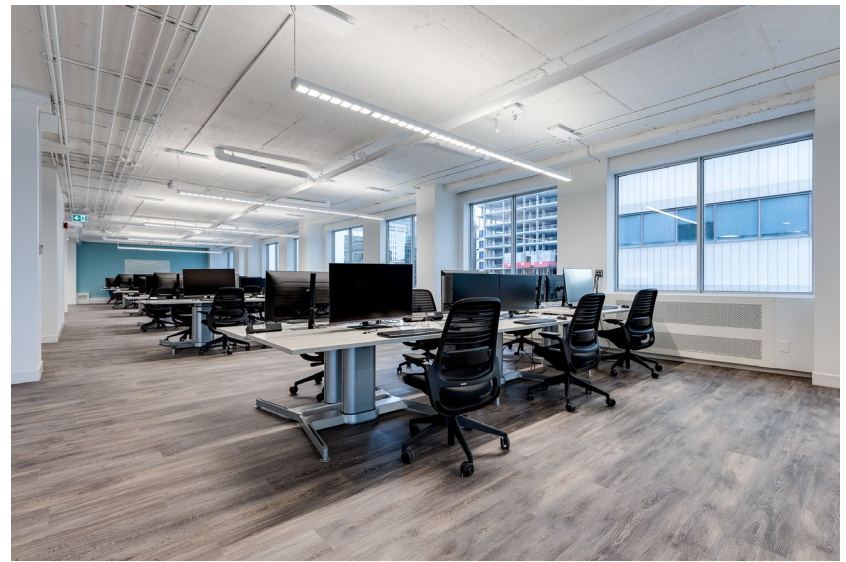
OFFERING SUMMARY

AVAILABILITY	SPACE USE	SIZE	NET RENT	ADDITIONAL RENT
February 1, 2026	Office	13,865 SF	\$18.00	\$18.37 (2025 Est.)

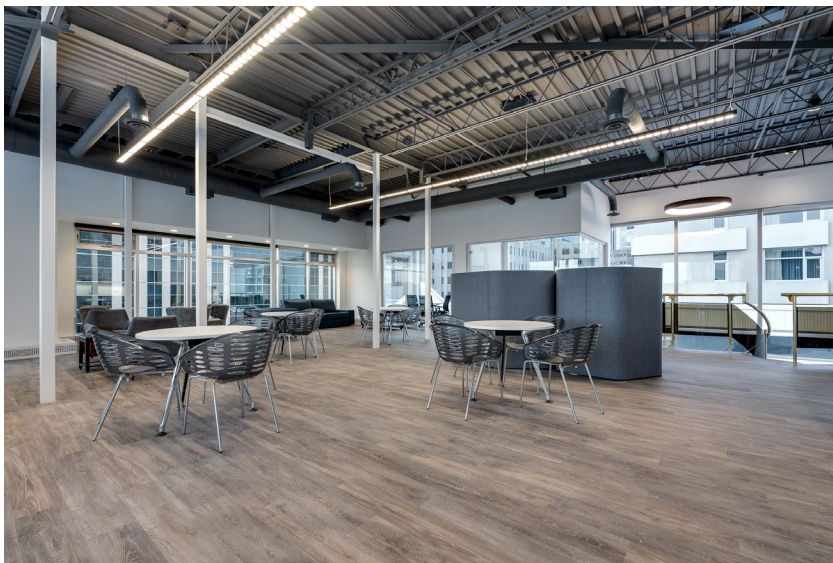
SUITE HIGHLIGHTS

- Fully built-out, full floor opportunity on the 11th and 12th floors, featuring ample natural light and incredible east-facing view of City Hall, the Courthouse, and the Rideau Canal
- The 12th-floor penthouse (former Gillin Engineering office) is accessed via a private curved internal staircase and features 14-foot exposed ceiling, floor-to-ceiling windows offering stunning city views, 2 glazed meeting rooms, and open-concept area with a kitchen
- The 11th-floor space features high-quality existing improvements, including 5 glazed meeting rooms, 4 enclosed offices, 4 phone booths, and a kitchen
- Open-concept layout with an exposed ceiling, offering a modern industrial look throughout
- Exterior patio opportunity and building signage available

141 LAURIER AVENUE WEST
SUITE 1100 AND PENTHOUSE

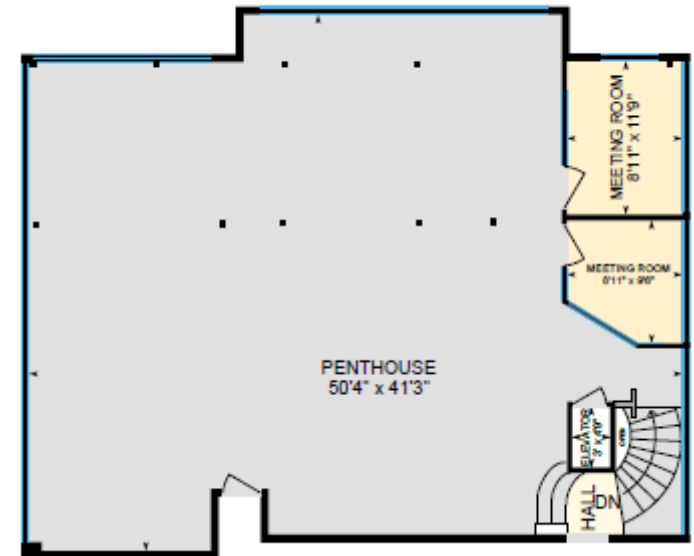
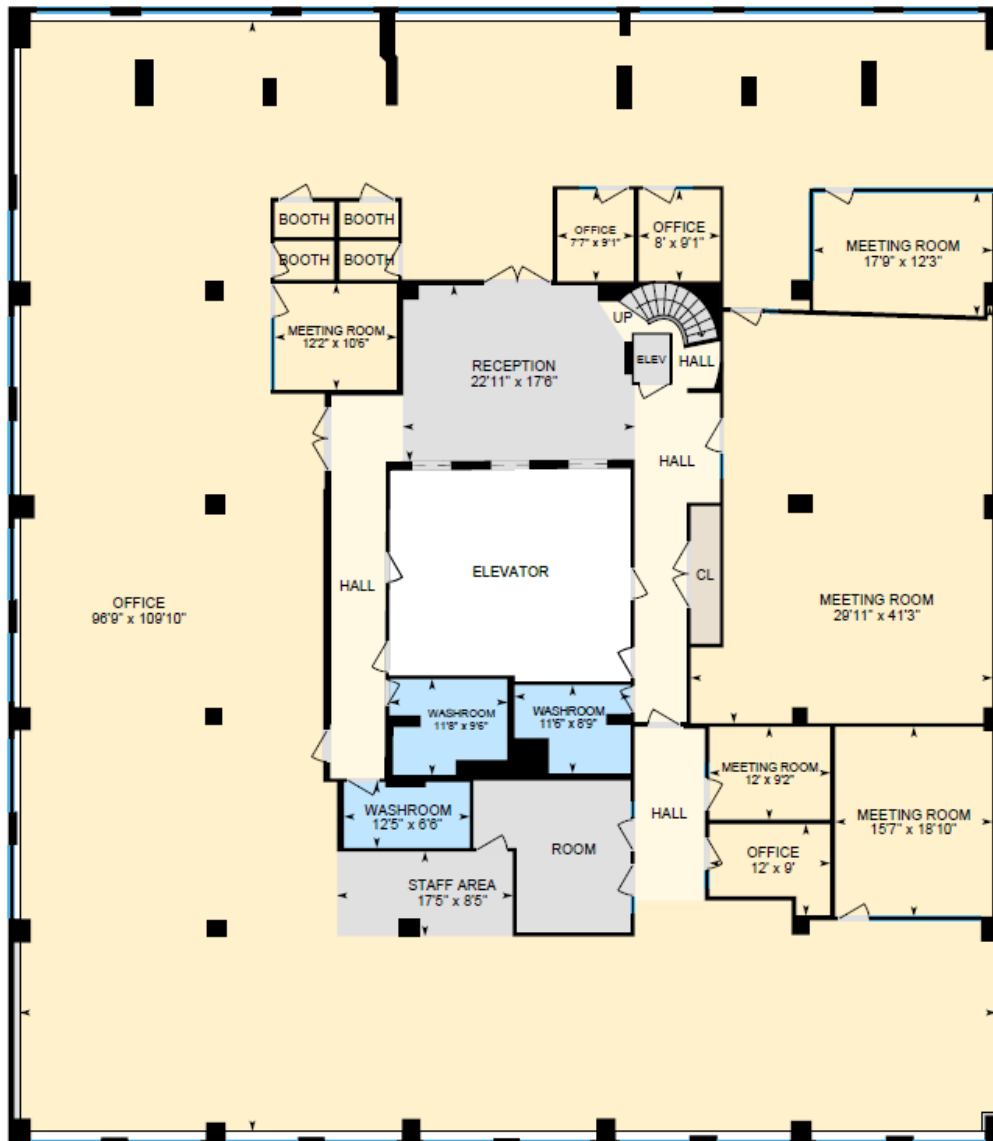


141 LAURIER AVENUE WEST
SUITE 1100 AND PENTHOUSE

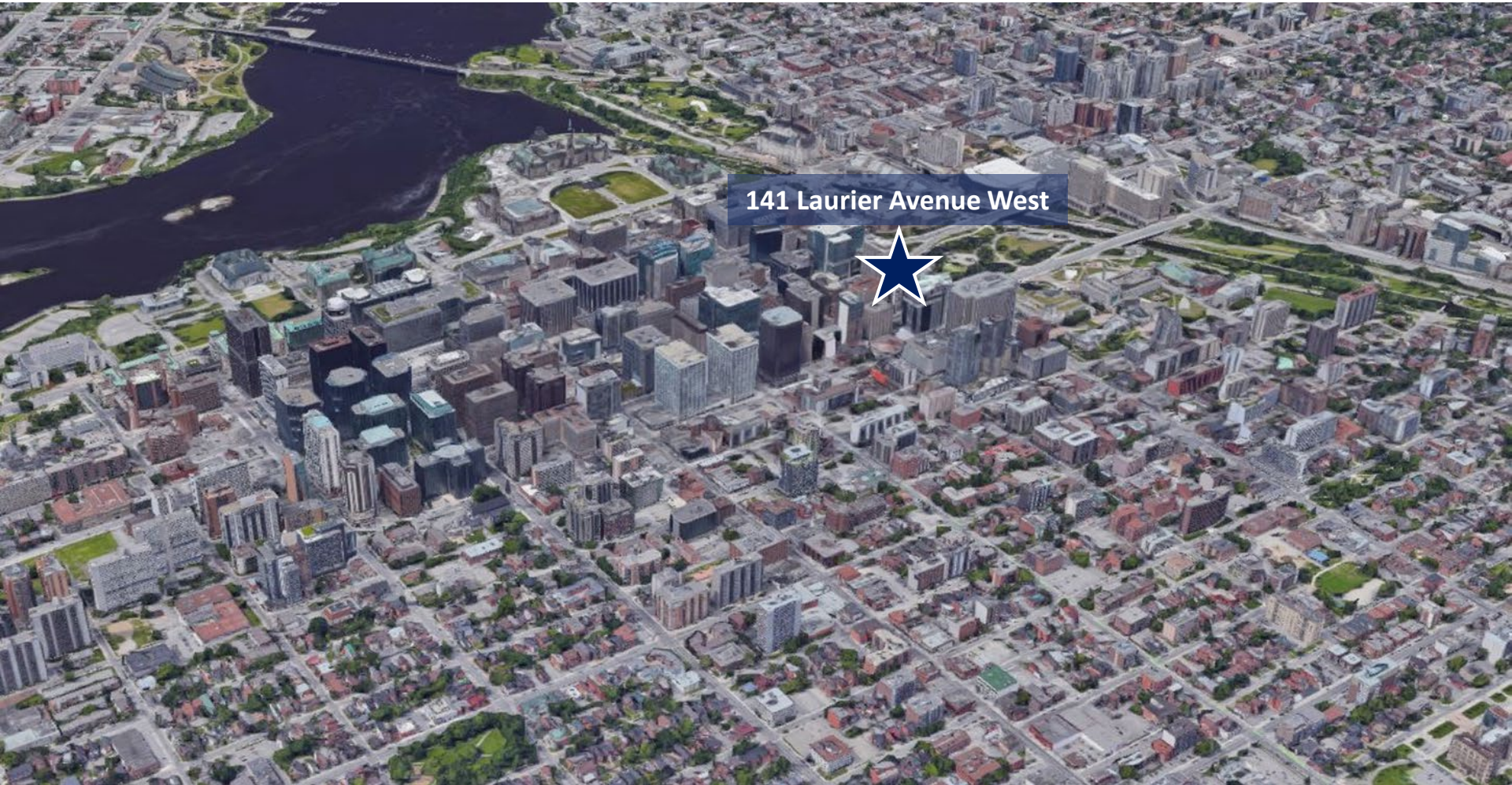


141 LAURIER AVENUE WEST SUITE 1100 AND PENTHOUSE

FLOOR PLAN



MAP



141 LAURIER AVENUE WEST
SUITE 1100 AND PENTHOUSE

MAP



141 LAURIER AVENUE WEST
SUITE 1100 AND PENTHOUSE

Contact: Jennings Real Estate Brokerage Inc.

Andrew Eberhard | Broker of Record
613-709-0263 | aeberhard@jre.ca

Iryna Loshkarova | Sales Representative
613-413-1361 | iloshkarova@jre.ca



JENNINGS
REAL ESTATE
BROKERAGE INC.